

# PRODUCT INFORMATION SHEET

Actual status: 02.03.18



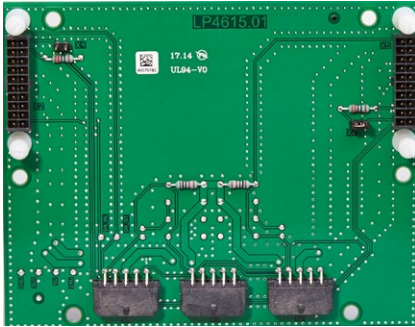
---

BACKPLANE FOR FIRE CONTROL PANEL DC 3500

CP 3500 BPB

Part-No.: 32811

---



The optional mounting kit (backplane and mounting plate) for the dc3500 central fire alarm panel allows an expansion up to the maximum number of 15 loop cards.

- Two additional Slots für modules / cards